

3423-A Bee Caves Road

Office in the heart of Westlake



CONTACT INFO

Courtney Landers | 512.626.2752
clanders@topo-dg.com | topo-dg.com



BUILDING A, Ste 200

Size	3,286 RSF
Rate	\$38 rsf/yr
NNN	\$13.50/rsf/yr

- Parking Ratio 4.46 : 1000
- Warm Dark Sell Delivery
- Delivery Q2 2024
- Dedicated Entry
- Signage Along Bee Caves Road

Office in the heart of Westlake Available Q2 2024

Tucked among an abundance of trees, lush landscape, and only 6 minutes to downtown, this multi-building property offers a serene office setting.

Designed by Studio Eles, 3423-A Bee Caves Road boasts thoughtful design, modern finishes, and ample parking.

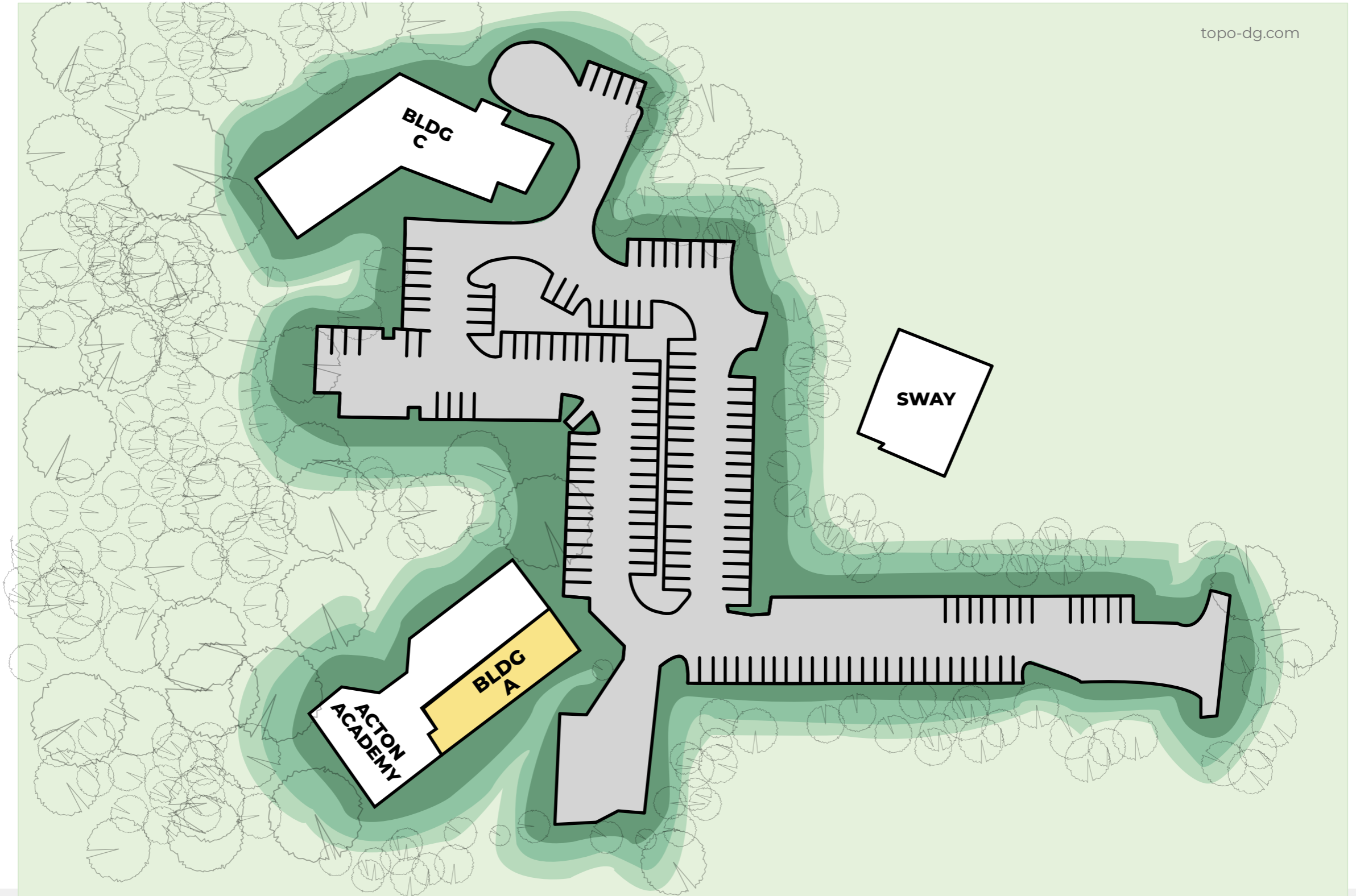


FOR LEASE

3423-A Bee Caves Road
Austin, TX 78746

THE TEAM

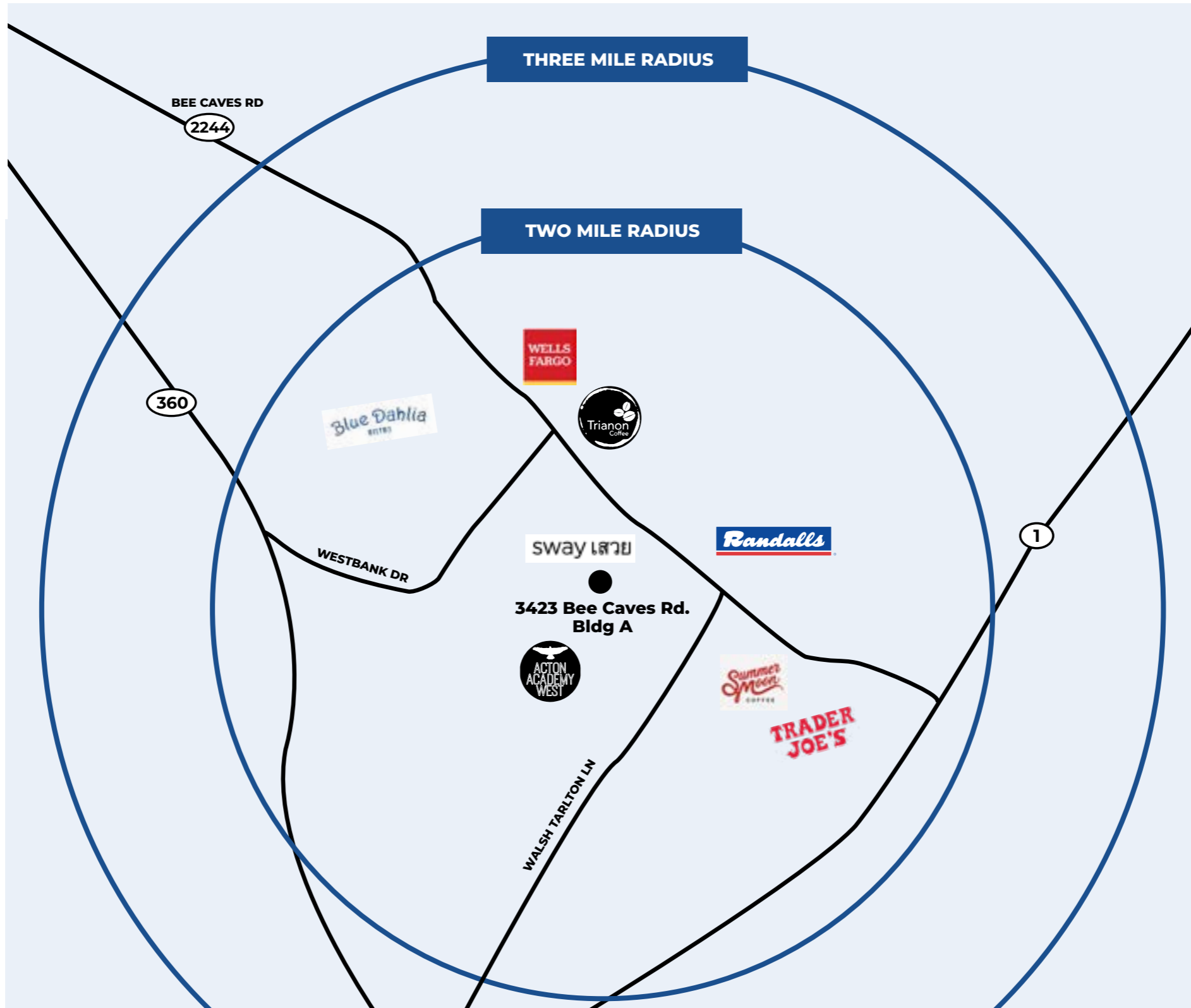
3423-A BEE CAVES ROAD is brought to you by **TOPO**, the same development team behind the East Austin creative meccas, Springdale General and Canopy and designed by **Studio Eles**.



FOR LEASE

3423-A Bee Caves Road
Austin, TX 78746

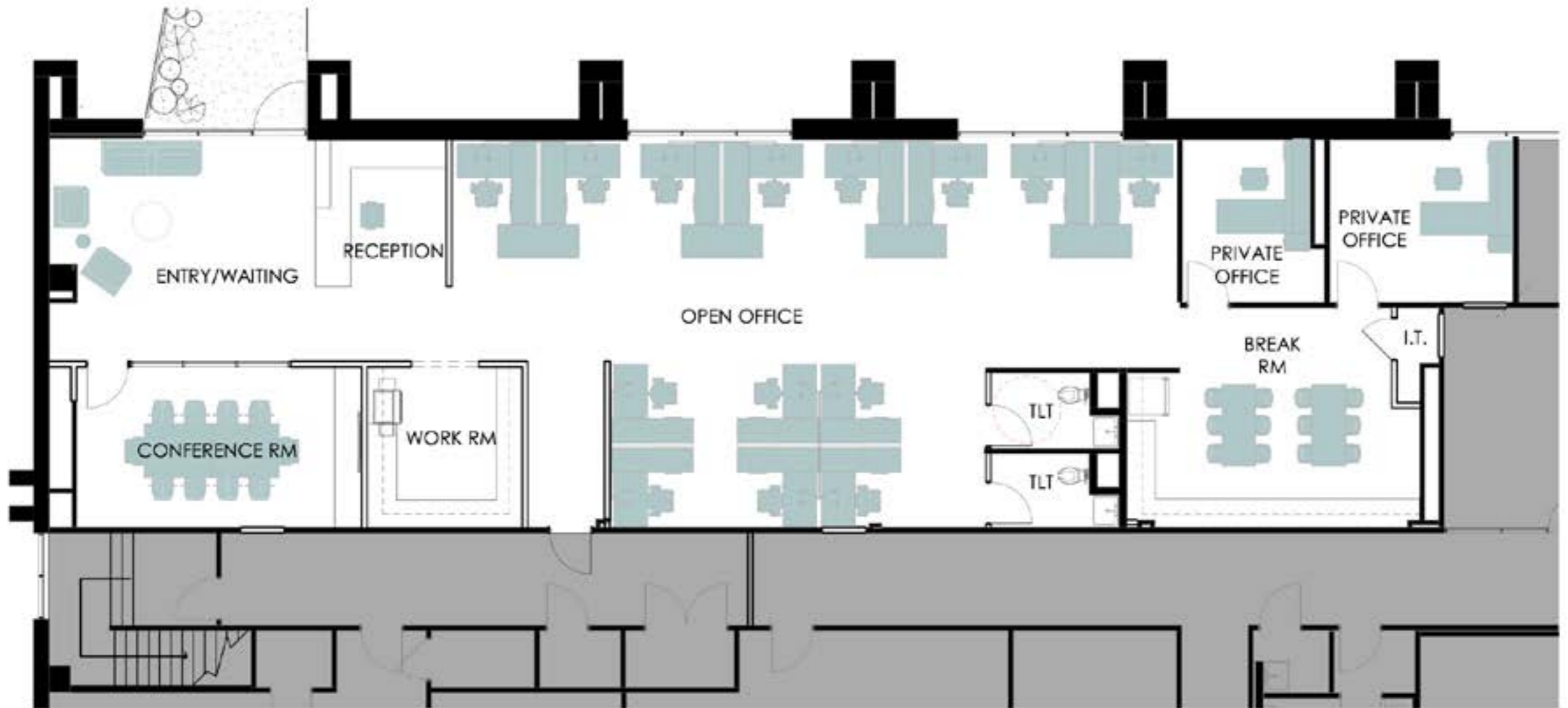
SITE PLAN



FOR LEASE

3423-A Bee Caves Road
Austin, TX 78746

RADIUS MAP



FOR LEASE

3423-A Bee Caves Road
Austin, TX 78746

**BUILDING A, STE. 200
OFFICE TEST FIT**



FOR LEASE

3423-A Bee Caves Road
Austin, TX 78746

**BUILDING A, STE. 200
HEALTHCARE TEST FIT**

CONTACT

COURTNEY LANDERS
512.626.2752
CLANDERS@TOPO-DG.COM

TOPO-DG.COM

